

Optionally Keyboard can be read through an A/D converter. When no keys are pushed, all four resistors are in series with A/D input resistor (1.6k) and protect res (330R), when any one key is pushed, 0,1,2 or 3 res are in series with A/D inp Voltage should be close to 0.55V (=3.3V / 6) per key and 2.75V with no keypush

Design -  
**AirBorn**  
 ELECTRONICS

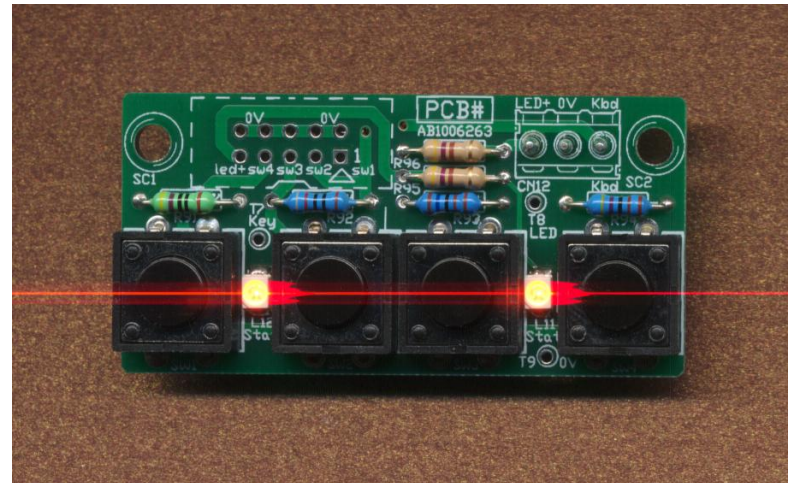


PCB LAM#2.  
 AB1006263

Title Simple Switch board		
Size A4	Number AB1006263	Revision V1.00a
Date: 16 Jun 2010	Sheet 1 of 1	
File: Z:\src\helper\4key	Drawn By: SM	



4key pcb photo



4key pcb photo

