

**Main Power**  
L2 Lights when Input voltage is above 10V

**Charging**  
L1 dim when nearly charged  
Bright if only Part way done

Thermally isolate Q3 so close to ambient. This makes the Float voltage track Batt. temperature for best battery longevity

Normal charge limit is 0.95A, to prevent heavy Input pwr load To drop to 0.45A for smaller PSU, cut R1B Add R1C to make 1.4A

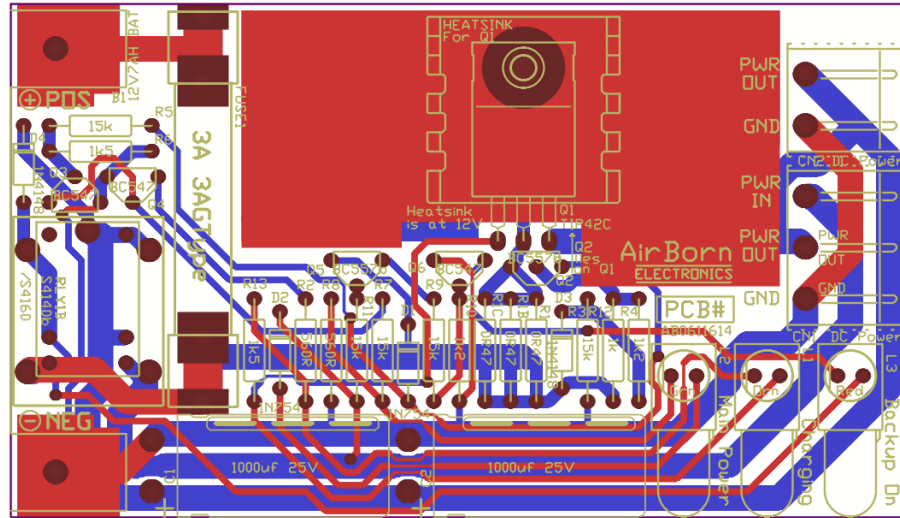
Lead acid batteries require replacement every few years with lifetime dropping if hot or often cycled

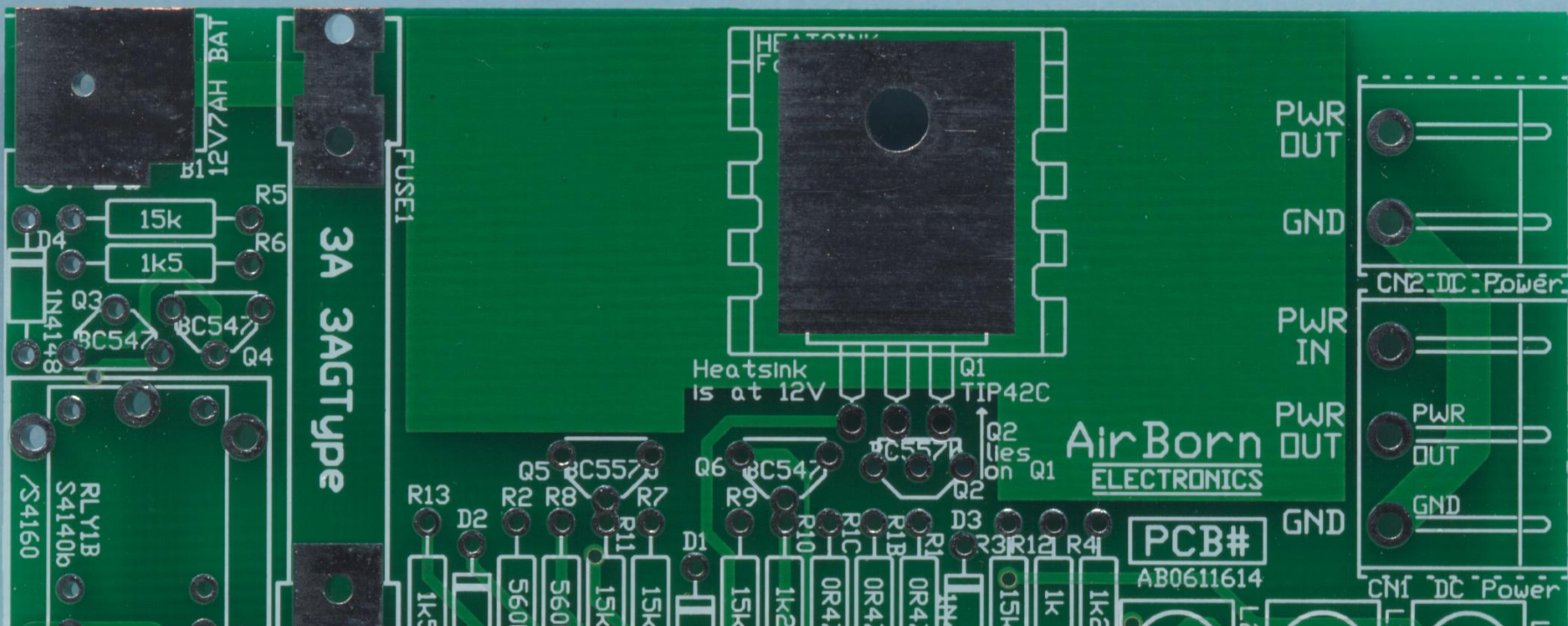
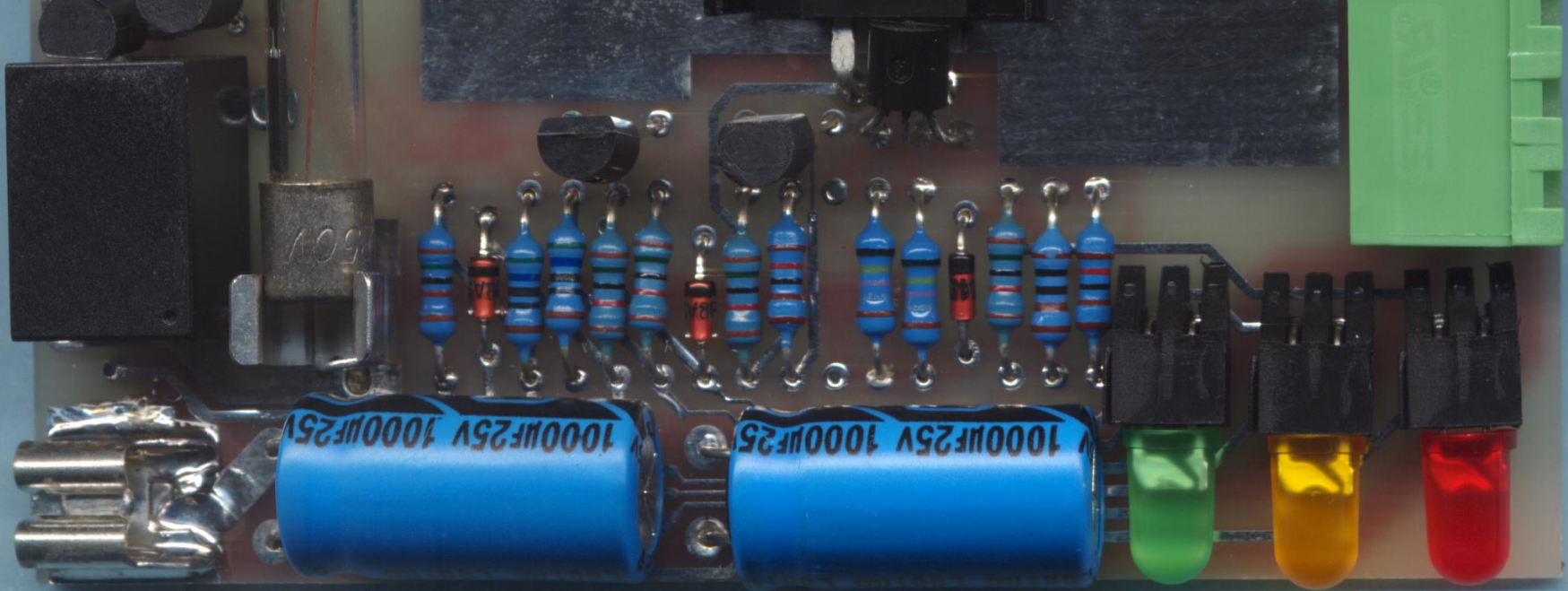
Battery recharge time is about 8hr at Standard charge current of 0.95A Do not leave unit in Discharged state for any appreciable time

Input 13.8 - 14.4V  
Output = Input -0.2V  
If Charge LED always stays bright, Input volts may be too low  
When input turns off Output = 12V Battery  
Battery disconnects when flat; about 10V  
Unit needs input pwr to reconnect battery  
Ideal input = 13.99V  
Cold conditions need higher input voltage

Title		
12V 1A UPS		
Size	Number	Revision
A4	AB0611614	V1.00b
Date: 27 Nov 2006	Sheet 1 of 1	
File: Z:\asrc\_pre2010\ups\ups12v1a	Drawn By: sm	

ups12v1a pcb overlay







ups12v1a pcb photo

